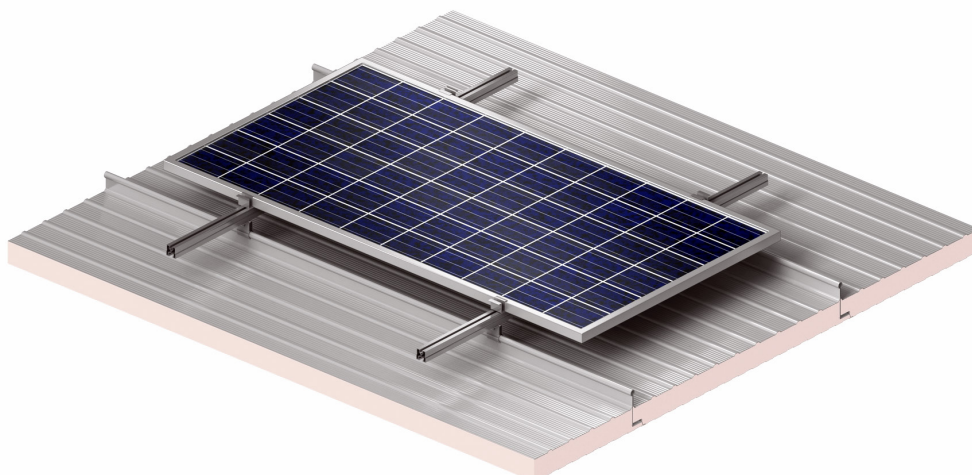
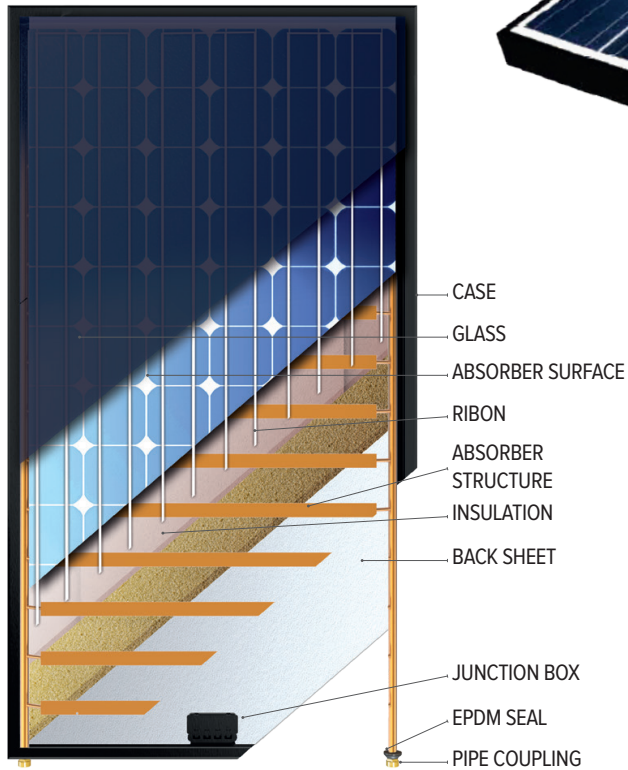
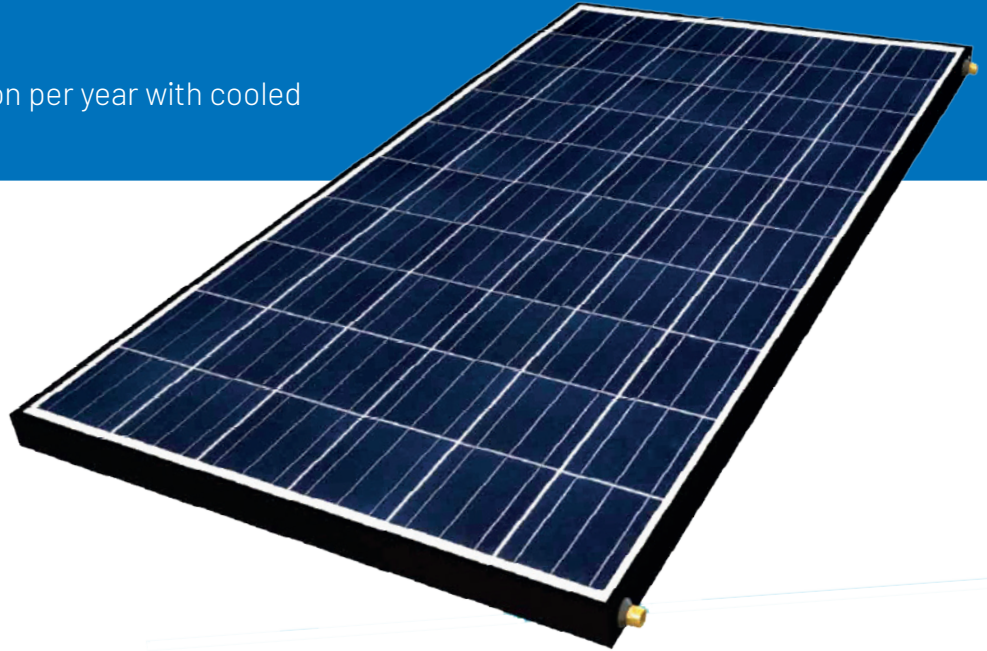


PV-T HYBRID PANELS

EXCELL 540 W

- ✔ Electricity and usable thermal hot water at the same time from one panel.
- ✔ Extra-much electricity production per year with cooled PERC cells.



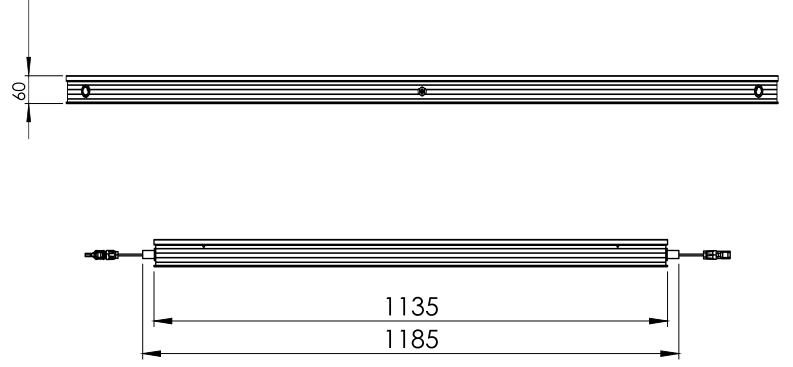
TECHNICAL SPECIFICATIONS OF HYBRID COLLECTORS



Typical Electrical Parameters

MR325M-60C/M

Peak Power Watts-PMAX (Wp)*	540
Power Tolerance Range-PMAX (W)	0~+5
Maximum Power Voltage-VMPP (V)	41,65
Maximum Power Current-IMPP (A)	12,97
Open Circuit Voltage-VOC (V)	49,98
Short Circuit Current-ISC (A)	13,68
Module Efficiency ^o m (%)	20,89
Maximum Power-PMAX (Wp)	405
Maximum Power Voltage-VMPP (V)	38,73
Maximum Power Current-IMPP (A)	10,46
Open Circuit Voltage-VOC (V)	46,98
Short Circuit Current-ISC (A)	11,20



STC: Irradiance 1000W/m², Cell Temperature 25°C, Air Mass AM1.5.

*Measuring tolerance: ±3%

NMOT: Irradiance at 800W/m², Ambient Temperature 20°C, Wind Speed 1m/s.

Mechanical Parameters

Solar Cells	Monocrystalline
Cell Orientation	144 cells (6 × 24)
Module Dimensions	2278×1134×35 mm (±0,1%)
Weight	28.KG
Front Glass	3,2 mm, High Transmission, AR Coated Heat Strengthened Glass
Encapsulant Material	POE/EVA
Back Glass	KPFType
Frame	35mm Anodized Aluminium Alloy
J-Box	IP 68 rated and 30cm or (optional 120cm cable)
Cables	Photovoltaic Technology Cable 4.0mm ²
Connector	MC4 EV02 / TS4

Specifications/Product Code

EXCELL PVT 540

Dimensions	2280x 1185 x 60mm
Weight	40 kg
Gross Area	2,7 m ²
Number Of Cells	144
Nominal Power (Wp)	540 W
Glazing	Pv Glass
Absorber Surface (PV)	Mono
Absorber Surface (T)	Copper
Safety Class	II
Maximum over current protection rating	15A
Peak Power perunit QPeak= 1200 W (Kiwa Test Report No. L0000435/B rev.02. Page 20 di 23)	1200 W

