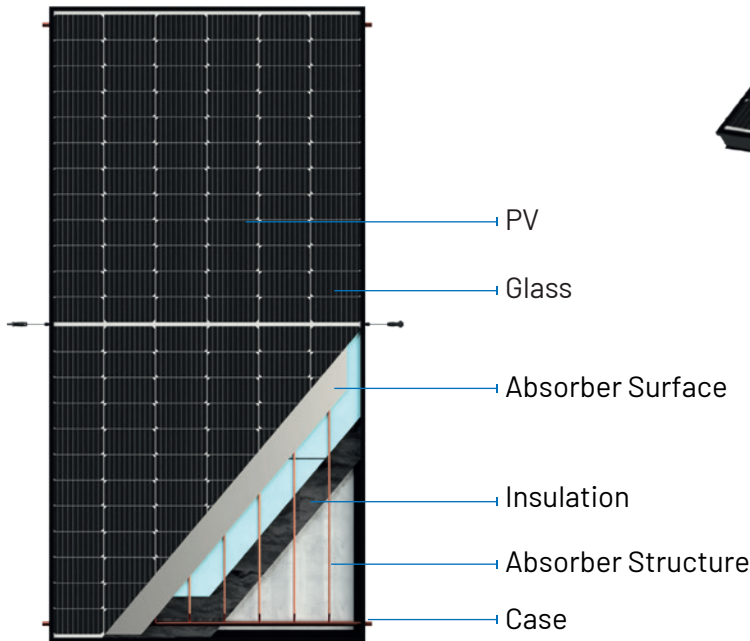
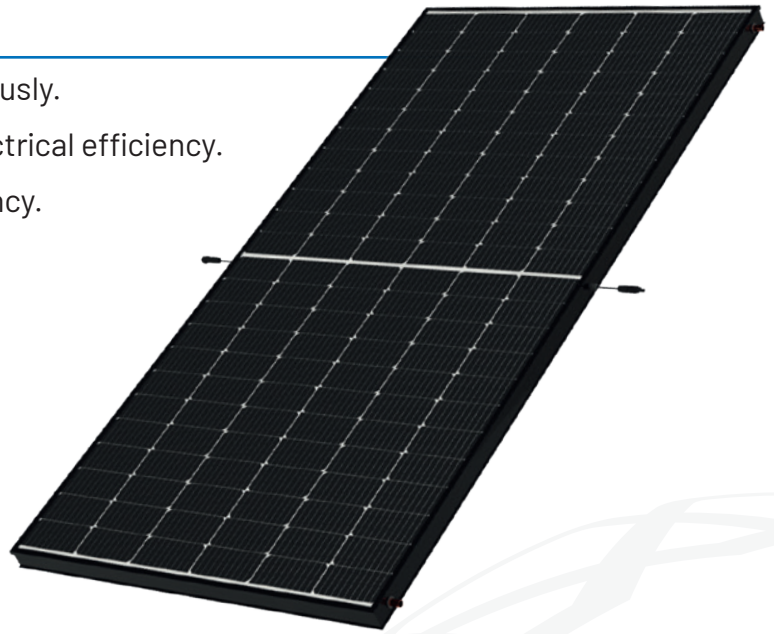


# PV-T EXCELL 590 W

- ✓ Produces electricity and heat energy simultaneously.
- ✓ Integrated PV cooling system that increases electrical efficiency.
- ✓ 22% Electrical Efficiency + 43% Thermal Efficiency.
- ✓ Gross Area 2.7 m<sup>2</sup>.

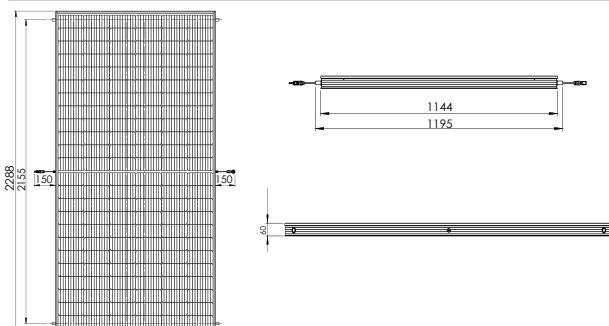


## PV-T EXCELL 590 W

### Typical Electrical Parameters

Peak Power Watts-PMAX (Wp)*	590
Power Tolerance Range-PMAX (W)	0~+5
Maximum Power Voltage-VMPP (V)	43,10
Maximum Power Current-IMPP (A)	13,69
Open Circuit Voltage-VOC (V)	51,72
Short Circuit Current-ISC (A)	14,44
Module Efficiency <sup>°m</sup> (%)	22,84
Maximum Power-PMAX (Wp)	439
Maximum Power Voltage-VMPP (V)	39,9
Maximum Power Current-IMPP (A)	11,00
Open Circuit Voltage-VOC (V)	48,39
Short Circuit Current-ISC (A)	11,77

STC: Irradiance 1000W/m<sup>2</sup>, Cell Temperature 25°C, Air Mass AM1.5.  
 \*Measuring tolerance: ±3%  
 NMOT: Irradiance at 800W/m<sup>2</sup>, Ambient Temperature 20°C, Wind Speed 1m/s.



### Mechanical Parameters

Solar Cells	Monocrystalline
Cell Orientation	144 cells (6 × 24)
Module Dimensions	2278×1134×35 mm (±0,1%)
Weight	28.KG
Front Glass	3,2 mm, High Transmission, AR Coated Heat Strengthened Glass
Encapsulant Material	POE/EVA
Back Glass	KPFTtype
Frame	35mm Anodized Aluminium Alloy
J-Box	IP 68 rated and 30cm or (optional 120cm cable)
Cables	Photovoltaic Technology Cable 4.0mm <sup>2</sup>
Connector	MC4 EVO2 / TS4

### Specifications/Product Code

### EXCELL PVT 590

Dimensions	2288x 1195 x 60mm
Weight	40 kg
Gross Area	2,7 m <sup>2</sup>
Number Of Cells	144
Nominal Power (Wp)	590 W
Glazing	Pv Glass
Absorber Surface (PV)	Mono
Absorber Surface (T)	Copper
Safety Class	II
Maximum over current protection rating	15A
Peak Power perunit QPeak= 1200 W (Kiwa Test Report No. L0000435/B rev.02. Page 20 di 23)	1200 W